



For Sale
135 Glenwood Rd.
Glenwood Landing
Mixed Use Building



**PERFECT SITE
FOR CONTRACTOR**

- +/- 6,356 Sq. Ft. Building
- 0.32 Acre Plot with Large Yard
- Ample Parking or Storage
- Ground Level +/- 4,000 sf
- Bonus 2nd Level
- Bonus Basement/Storage

Currently Used As Office And Storage Facility

Formerly Used As Restaurant/Bar

Asking Sale Price: \$1,900,000.00
Taxes: \$33,239.92 +/-



www.greiner-maltz-longisland.com

Exclusive Broker: Christine Seewagen
Office: (516) 364-1000
Cell: (516) 647-8088
Email: seewagen@verizon.net

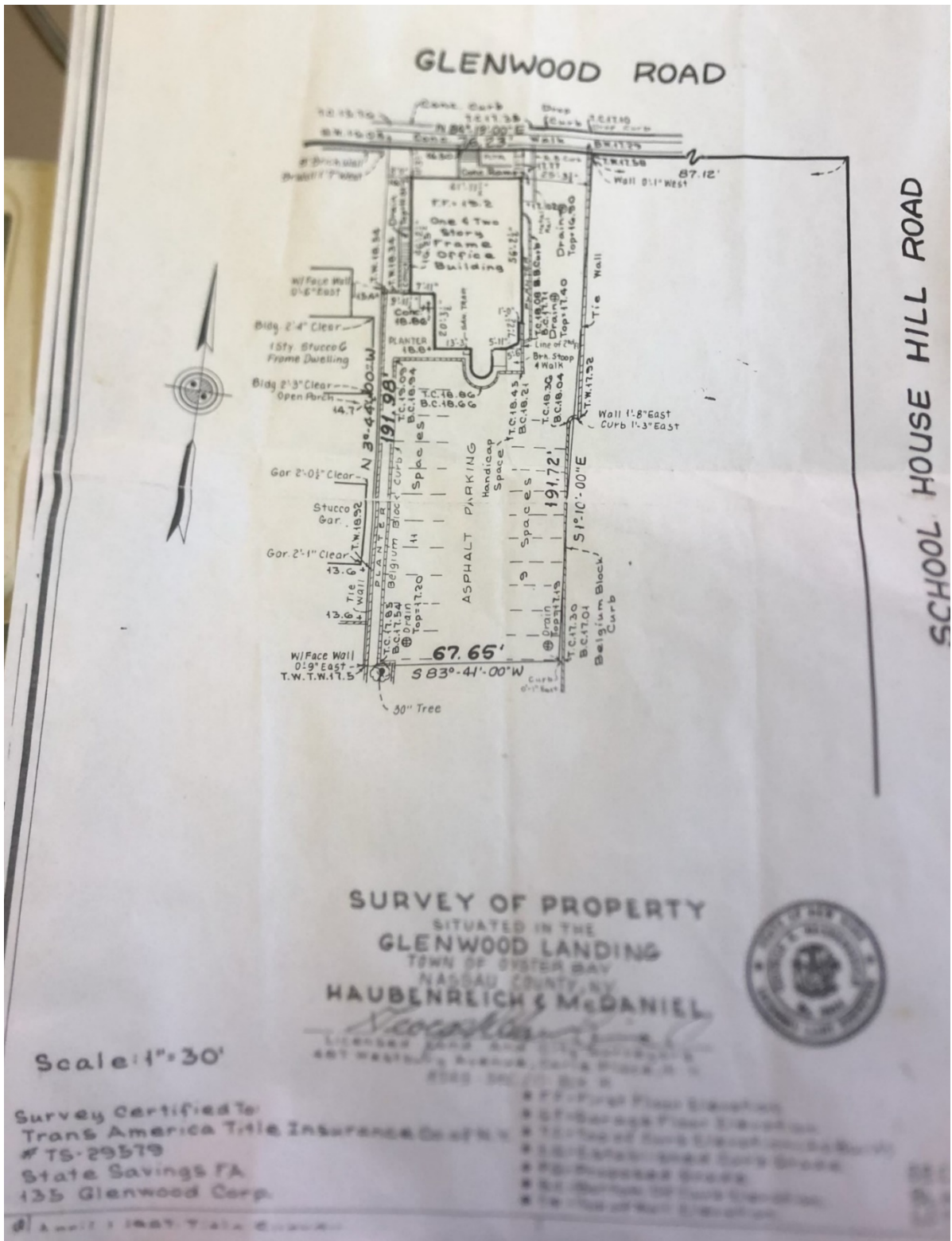
Greiner-Maltz Co. of Long Island | 185 Express Street, Plainview, NY 11803 (516) 364-1000

135 Glenwood Road Glenwood Landing

**Large Yard Can be Used for Parking or Storage
Great for Contractor!!**



Greiner-Maltz Co. of Long Island | 185 Express Street, Plainview, NY 11803 (516) 364-1000



Greiner-Maltz Co. of Long Island | 185 Express Street, Plainview, NY 11803 (516) 364-1000

No warranty or representation, express or implied, is made as to the accuracy of the information contained herein, and same is submitted subject to errors, omissions, change of price, rental or other conditions, withdrawal without notice, and to any special listing conditions, imposed by our principals.