



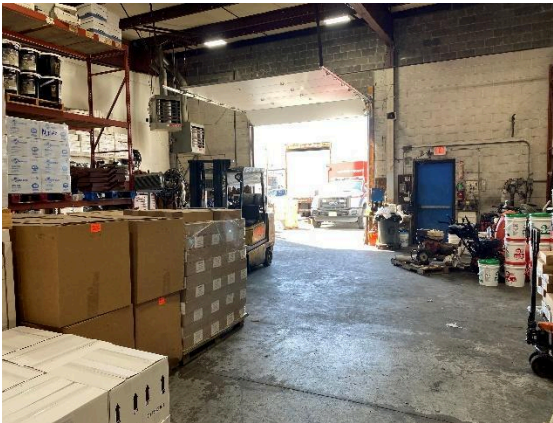
FOR LEASE

75 URBAN AVE.
WESTBURY, NY

Available +/- 5,000 Sq. Ft.



- +/- 5,000 Sq. Ft. Available for Lease
- Office: 15%
- Heat: Gas
- Loading: 1 Drive-in Door
- Height: +/- 16'



Desirable Industrial Park

Please Contact Exclusive Broker:
Tom Attivissimo, CCIM (516) 606-6161 Email: tomatti@greiner-maltz.com

Greiner-Maltz Co. of Long Island | 185 Express Street, Plainview, NY 11803 (516) 364-1000

No warranty or representation, express or implied, is made as to the accuracy of the information contained herein, and same is submitted subject to errors, omissions, change of price, rental or other conditions, withdrawal without notice, and to any special listing conditions, imposed by our principals.



75 Urban Avenue
Westbury, NY



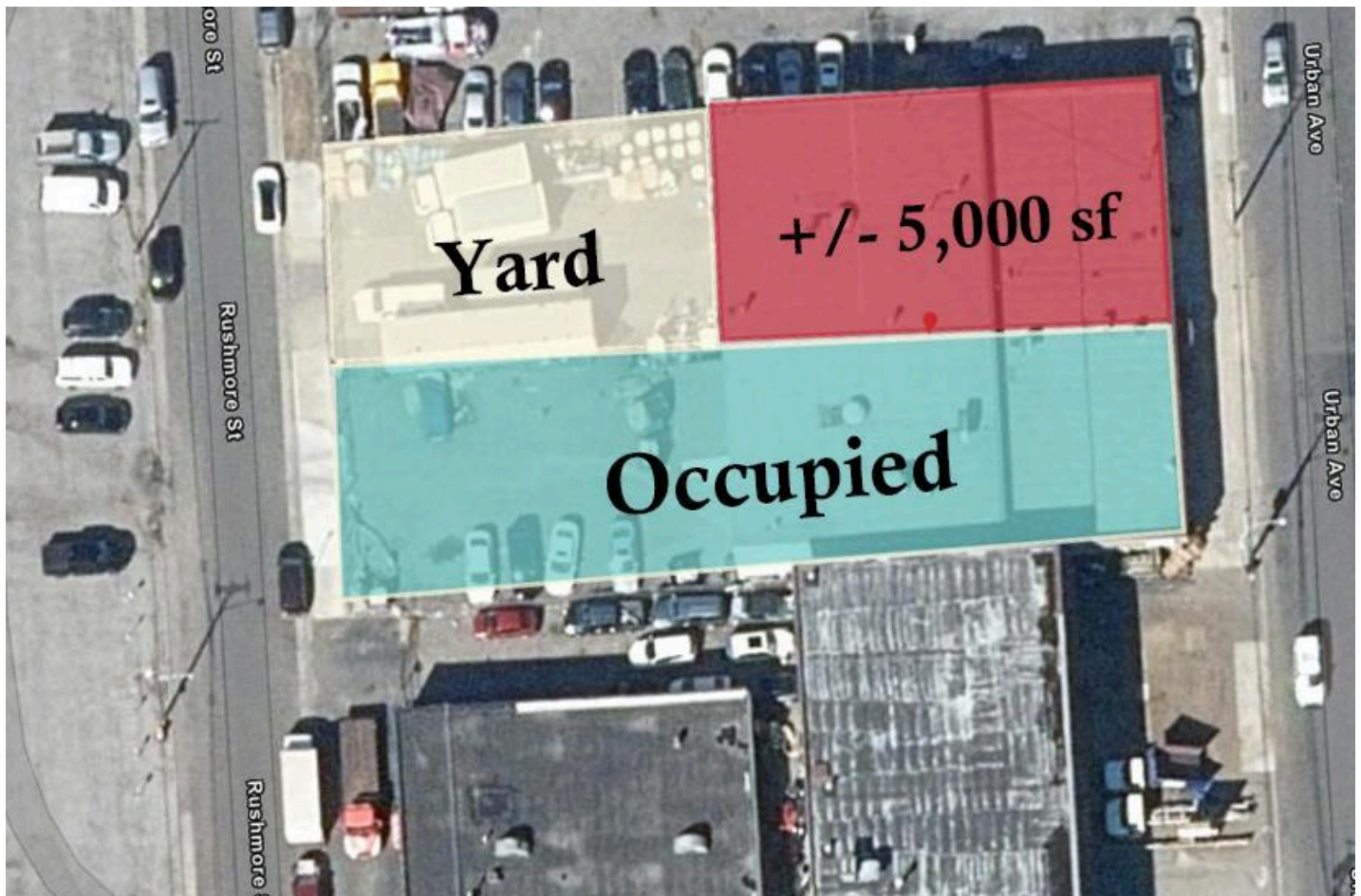
**Please Contact Exclusive Broker:
Tom Attivissimo, CCIM (516) 606-6161 Email: tomatti@greiner-maltz.com**

Greiner-Maltz Co. of Long Island | 185 Express Street, Plainview, NY 11803 (516) 364-1000

No warranty or representation, express or implied, is made as to the accuracy of the information contained herein, and same is submitted subject to errors, omissions, change of price, rental or other conditions, withdrawal without notice, and to any special listing conditions, imposed by our principals.



75 Urban Avenue
Westbury, NY



Greiner-Maltz Co. of Long Island | 185 Express Street, Plainview, NY 11803 (516) 364-1000

No warranty or representation, express or implied, is made as to the accuracy of the information contained herein, and same is submitted subject to errors, omissions, change of price, rental or other conditions, withdrawal without notice, and to any special listing conditions, imposed by our principals.

